

6

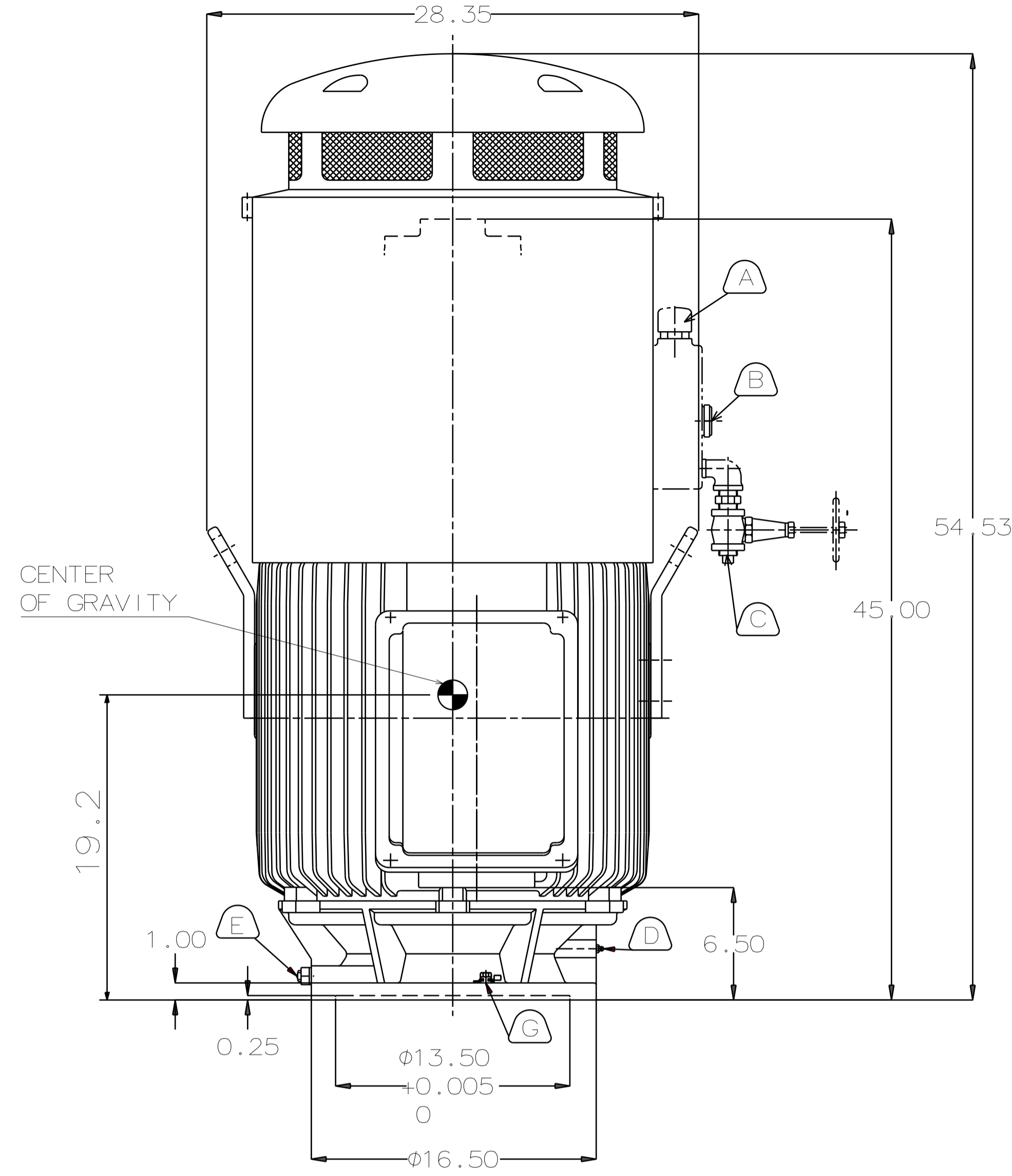
5

4

3

2

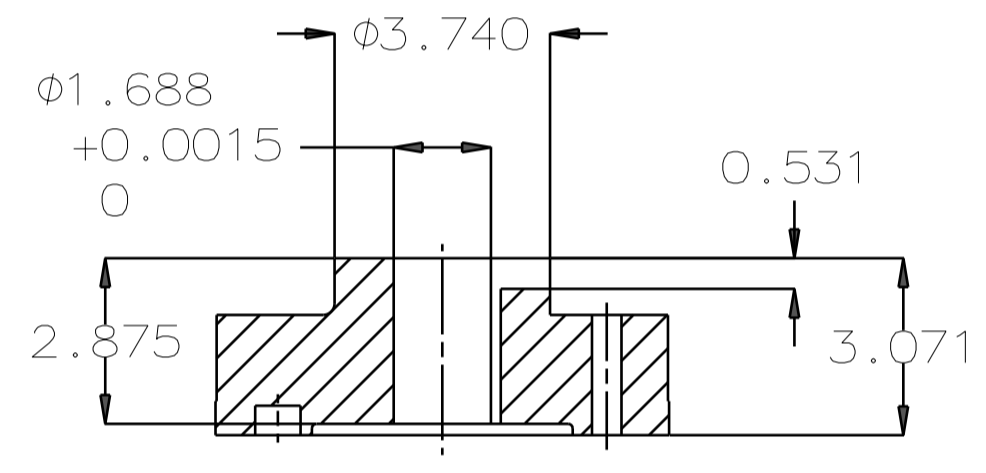
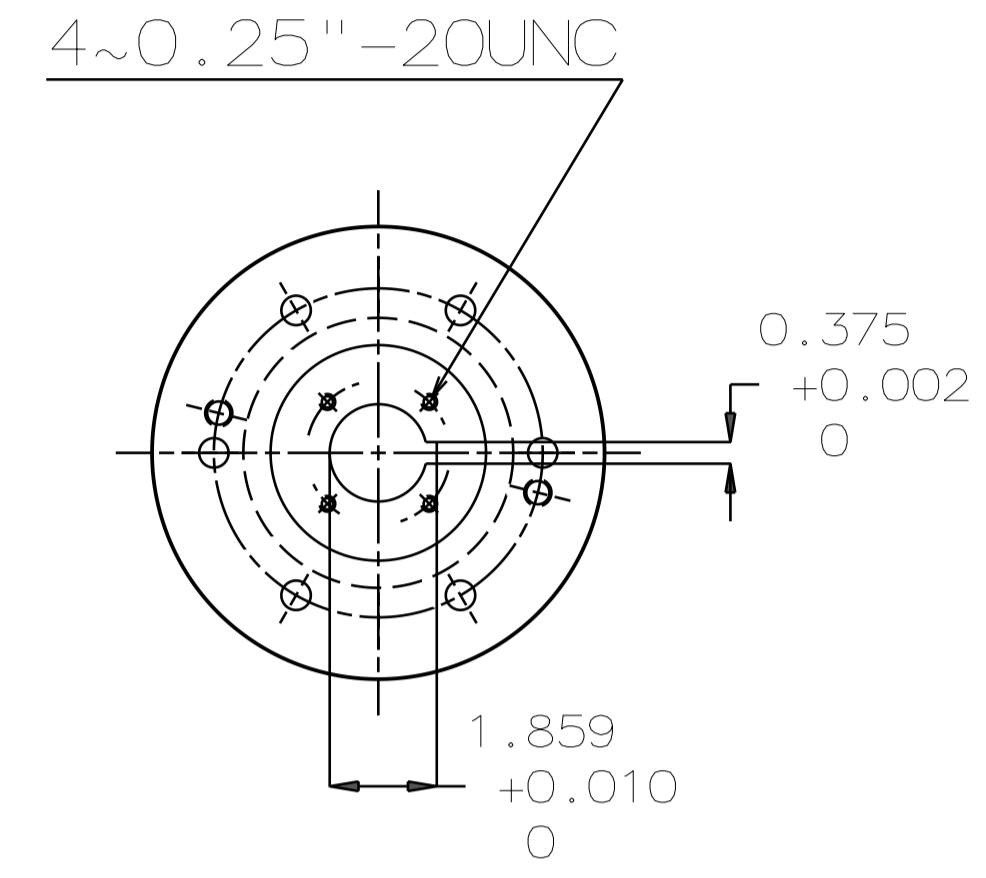
1



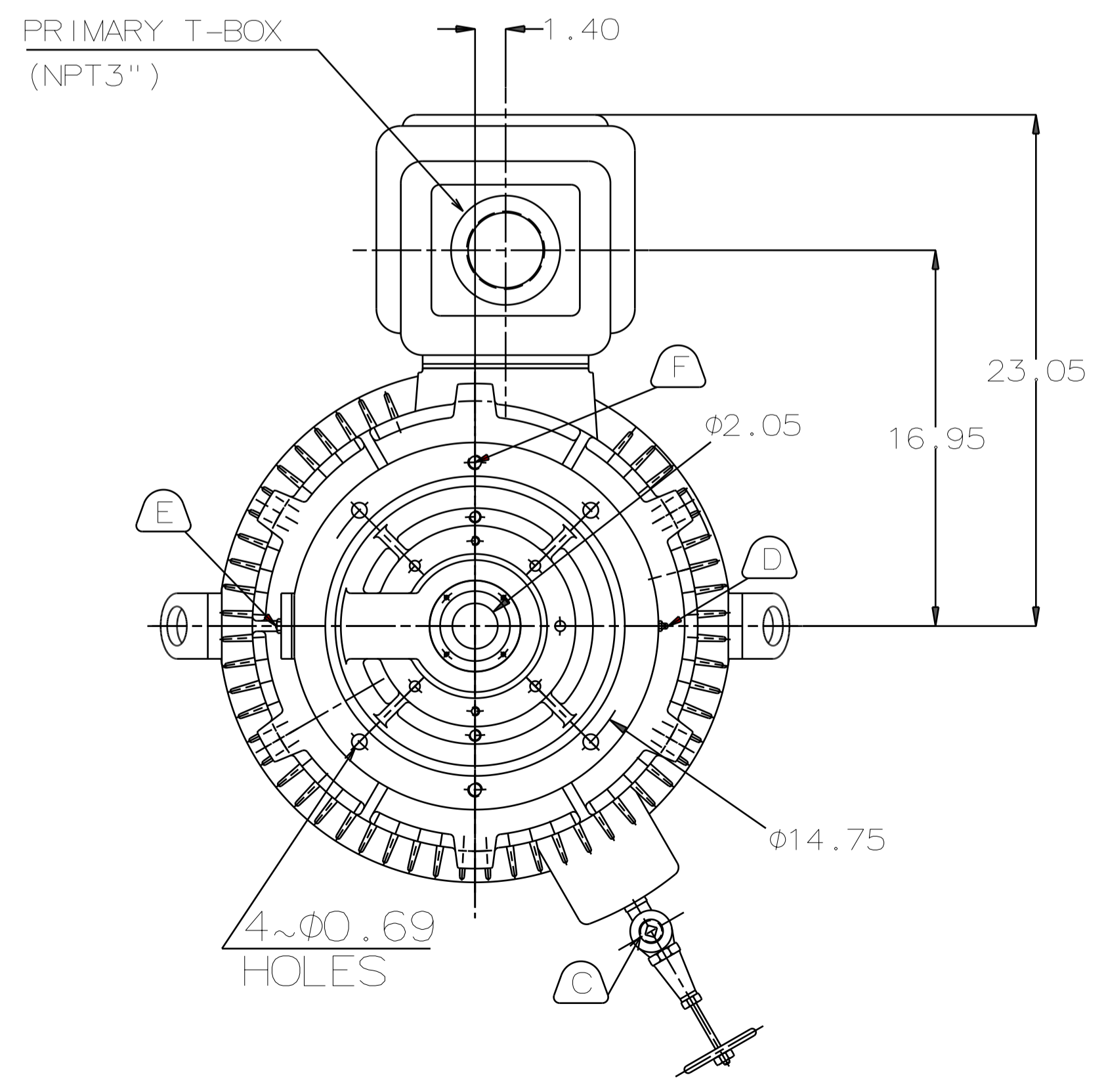
TYPE	OUTPUT		POLE	TIME RATING	VOLTAGE V	Hz	SYN. SPEED R.P.M
	HP.	kW.					
AEEHNNH	125	93.2	6	CONT	230/460	60	1200

TOTALLY ENCLOSED FAN-COOLED VERTICAL HOLLOW SHAFT TYPE, SQUIRREL CAGE ROTOR

- NOTE:
1. DIMENSIONS IN INCH
 2. FRAME NO.445TP
 3. F CLASS INSULATION, S.F.: 1.15
 4. FOR DIRECT COUPLING.
 5. BEARING SIZE:
UPPER BEARING: 7324B (UNINSULATED)
LOWER BEARING: 6316C3 (UNINSULATED)
 6. LUBRICATION:
UPPER BEARING USE OIL.
OIL VISCOSITY: ISO VG68 [300SSU AT 100°F]
OIL QUANTITY: 2.6 GAL.
LOWER BEARING USE GREASE. (MOBIL POLYREX EM)
 7. ROTATION: COUNTER-CLOCKWISE [VIEW FROM TOP].
 8. WITH NON-REVERSE RATCHET MECHANISM.
 9. WITH GIB KEY: 0.375X0.375X2.874, 1PCS
 10. APPROXIMATE WEIGHT: 2060
 11. REED FREQUENCY: 40 HZ
 12. DOWNTHRUST: 10,100 LBS (L10-8800HRS)
 13. SPACE HEATER RATED AT 120 VOLT, SINGLE PHASE, 109 WATTS, LEADS TERMINATE IN MAIN LEAD BOX.



COUPLING
(ENLARGED VIEW)



- (A) OIL FILLER [UPPER BEARING]
- (B) OIL GAUGE [UPPER BEARING]
- (C) OIL DRAIN [UPPER BEARING]
- (D) GREASE INLET [LOWER BEARING]
- (E) GREASE DISCHARGER [LOWER BEARING]
- (F) 2~M16 VERTICAL JACKING HOLES 180° APART IN MOTOR BASE.
- (G) M10 TAPPED HOLE IN MOTOR BASE WITH GROUNDING TERMINAL [R38-10] & BOLT LOCATED AS SHOWN.

DATE DEC 08 2016			OUTLINE DIMENSIONS	
VHTP1256			3-PHASE INDUCTION MOTOR	
DWN.	C.FU	APR.28.2015	DWG NO.	REV:00
CHKD.	R.LEE	APR.28.2015	4B040L243	
APPD.	C.LIU	APR.28.2015		



6

5

4

3

2

1